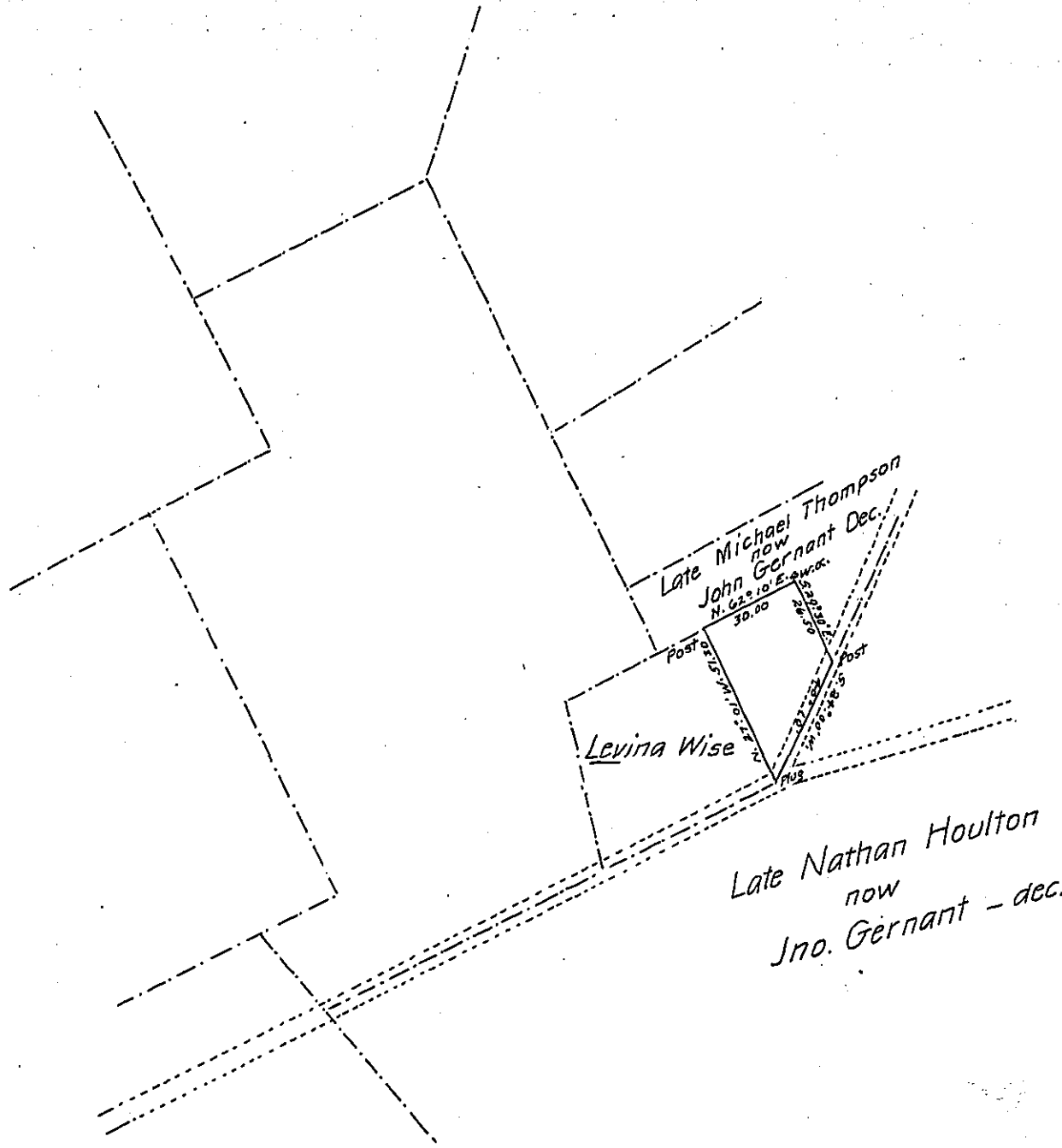


FORM NO. 1.



A draft of a tract of land, situate in the Township of ^{Ontelaunee} ~~Maidencreek~~ and county of Berks, containing seven Acres, nine perches and allowance of six per cent. for roads &c. — Surveyed for William Grater, the 16th. day of May, A.D. 1885. It being a part of a larger tract of one hundred and forty two acres, eighty perches and allowance, ^{surveyed in pursuance of a warrant} originally granted to Edmund Moran, dated the 29th. day of May A.D. 1760.

Sol. K. Dreibelbis C.S.

To J. Simpson Africa
Secretary of Internal Affairs

IN TESTIMONY that the above is a copy of the original remaining on file in the Department of Internal Affairs of Pennsylvania, made conformably to an Act of Assembly approved the 16th day of February, 1833, I have hereunto set my Hand and caused the Seal of said Department to be affixed at Harrisburg, this fourteenth day of March 1906

Loac P Brown
Secretary of Internal Affairs.